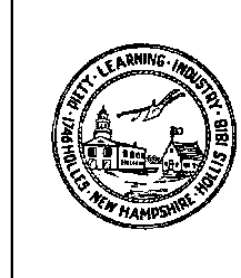
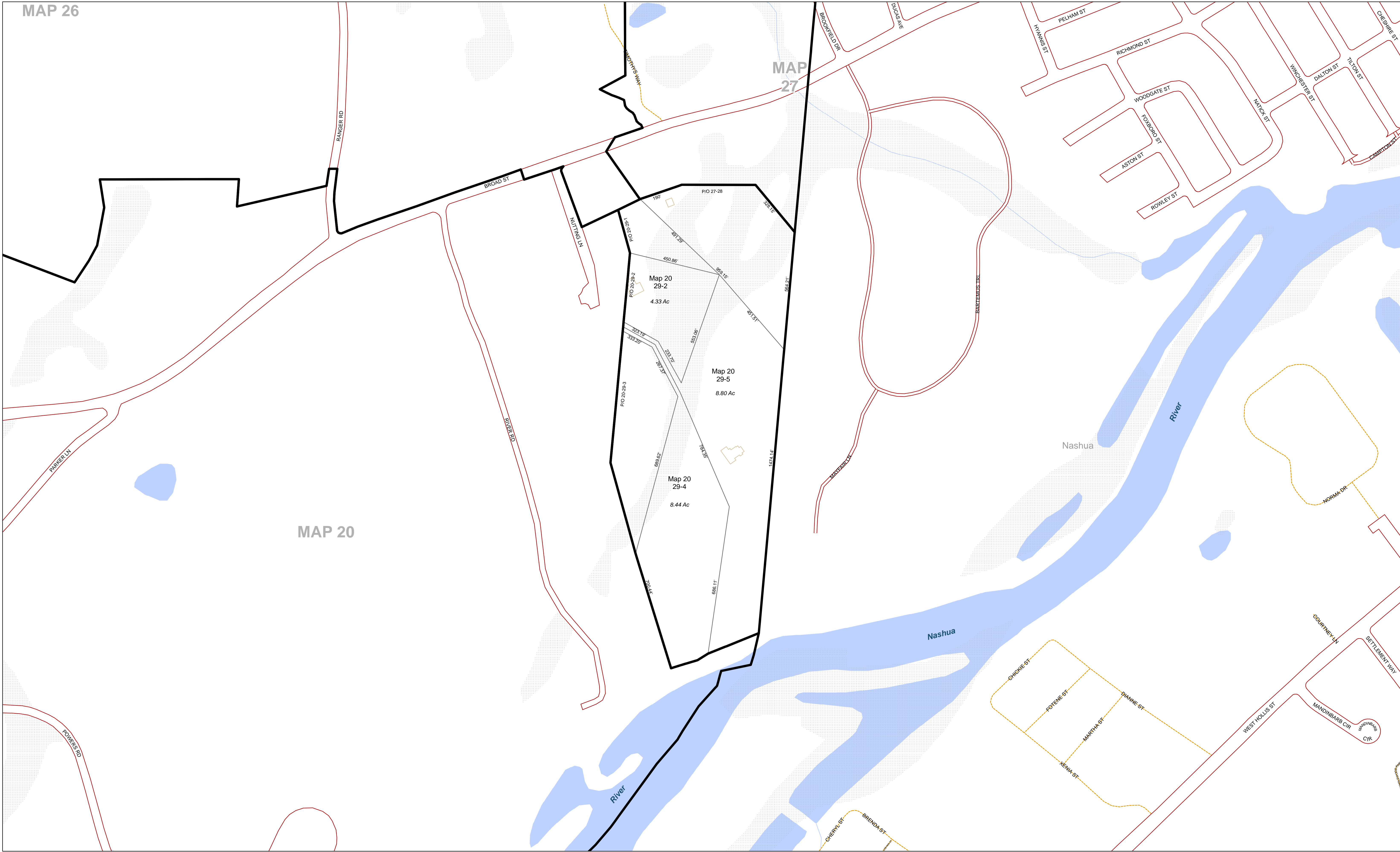


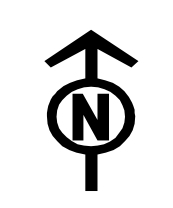
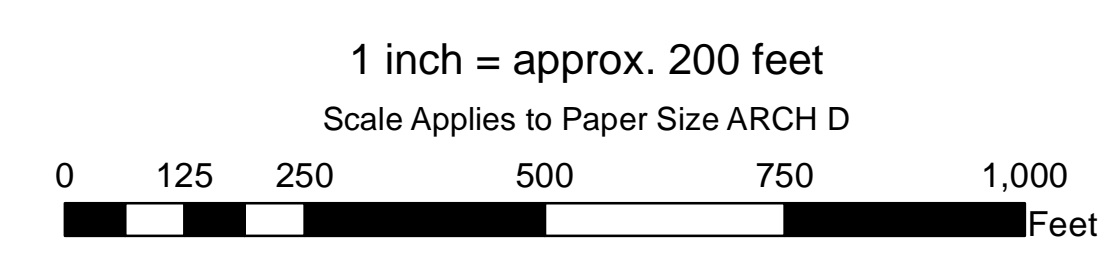
MAP 26

MAP 27

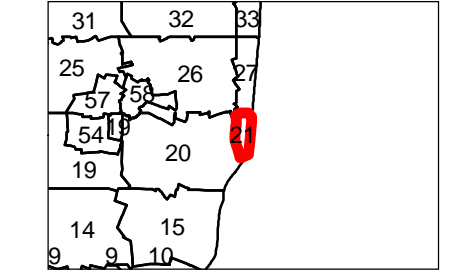
MAP 20



TAX MAP  
**TOWN OF HOLLIS**  
 HILLSBOROUGH COUNTY  
 NEW HAMPSHIRE



Map  
**21**



- Parcel
- Road/ROW
- Private Road
- Easement
- Building
- Waterbody
- Swamp/Marsh/Bog
- Stream/River, Connector

7.89 Area  
 123.456 Dimension  
 25-64 Lot Number

For Tax Assessment Purposes  
 Not to be Used for Conveyances  
 Zoning Lines Depicted are  
 Unofficial and Approximate  
 Prepared by:  
 Nashua Regional Planning Commission  
 Merrimack, New Hampshire



September 1, 2018